

HiLIFE

HELSINKI INSTITUTE OF LIFE SCIENCE

CALL FOR DIRECTOR

HiLIFE Helsinki Institute of Life Science is one of the leading life science research institutes in the Nordics. It fosters outstanding research and generation of innovations across the University of Helsinki campuses to create an attractive international environment where today's grand challenges in health and environment are solved together.

We now seek Director to provide enthusiastic, inspiring, and clear leadership to HiLIFE as a spearhead of the University's life science strategic research area and as a partner to the faculties of the University.

WE BELIEVE THAT
BREAKTHROUGHS EMERGE
BY GIVING TALENTED
RESEARCHERS SUFFICIENT
RESOURCES AND FREEDOM
TO PURSUE THEIR
AMBITIONS AND EXPERTISE
TOWARDS HIGHER GOALS.



UNIVERSITY OF HELSINKI

WE ARE A TOP RESEARCH UNIT WITH CROSS-CAMPUS DEVELOPMENT RESPONSIBILITIES

[Life Science research at the University of Helsinki](#) covers broad scope from structure, function and dynamics of molecules, microbes and cells to entire organisms and ecosystems. Multiple units at all four [University's campuses](#), but mainly Viikki and Meilahti, host life science researchers. HiLIFE was established in 2017 to bridge over these units and campuses and thus build even more vibrant life science community.

Administratively [HiLIFE](#) is a research institute independent of the University's faculties, the director of which is directly accountable to the Rector. HiLIFE contains the [Institute for Molecular Medicine Finland FIMM](#), [Institute of Biotechnology](#) (BI) and [Neuroscience Center](#) (NC). These units play an important role in developing a strong international research environment in their focus areas and bring important expertise to

HiLIFE in recruitment, training, core facilities, innovation, and international cooperation. HiLIFE is also the only unit at the University of Helsinki that takes responsibility of the cross-campus needs and development in the Life Science area. This dual role makes HiLIFE a unique entity in the University.

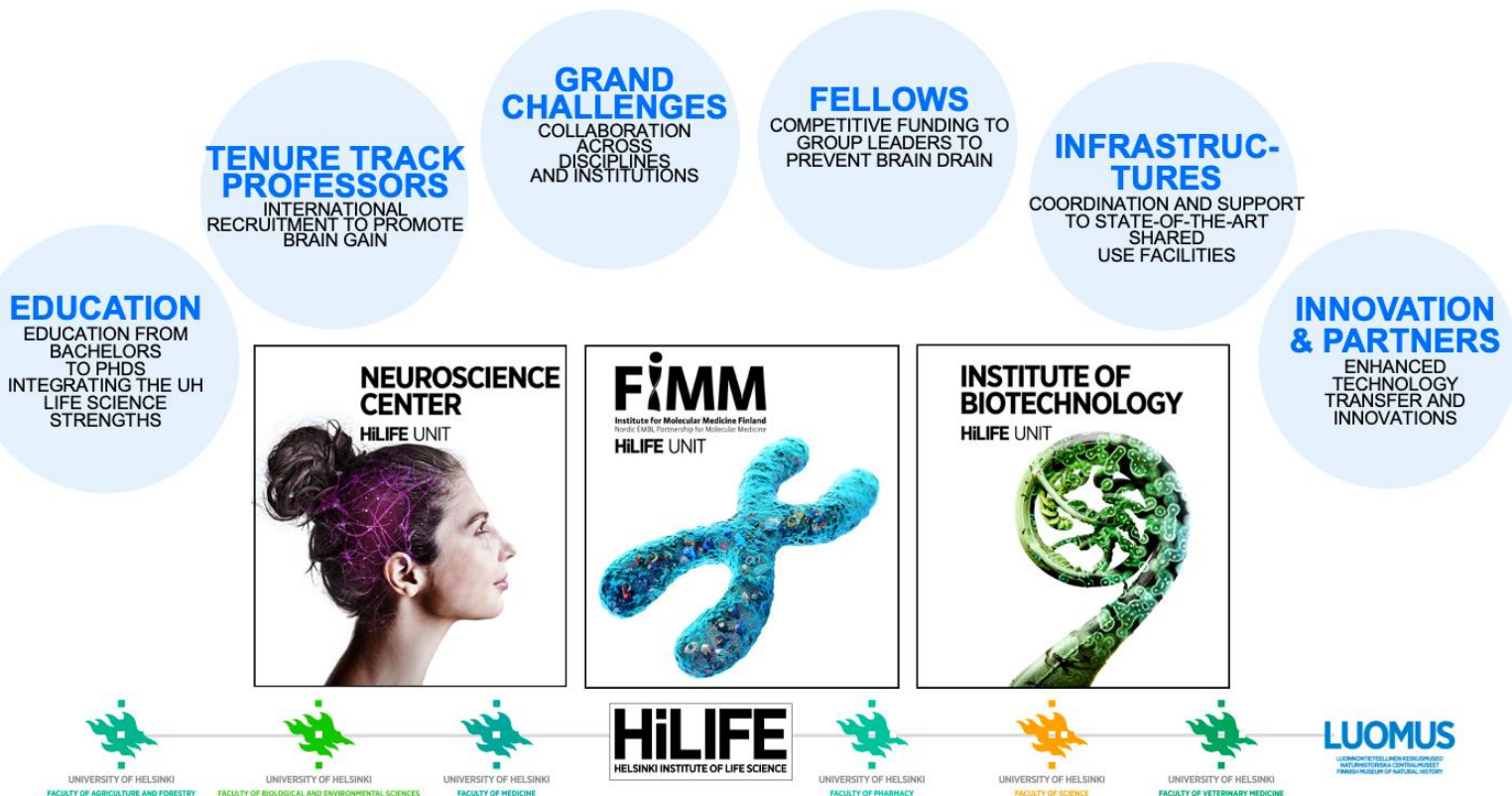
HiLIFE employs more than 650 diverse scientists and support staff. With about 50% of international staff the daily working language is English. HiLIFE's budget exceeds 60 M€ of which about 65% is external competed research funding. HiLIFE hosts about 80 principal investigators including multiple ERC grantees. Measured by CNCI (Category Normalized Citation Impact 2017-2020) HiLIFE is the top research unit at the University. It is also forerunner in the open access publishing.



OUR LIFE SCIENCE UMBRELLA ACTIVITIES

HiLIFE coordinates shared use life science research infrastructures, provides research-based interdisciplinary training, and promotes resourcing of high-quality research. With these umbrella activities, HiLIFE enhances cross-border interdisciplinary life science research and elevates the quality of research also across the six life science faculties at the University. HiLIFE brings together, develops and supports [research infrastructure platforms](#) in the life sciences field, and its [Grand Challenge](#) and [Innovation](#) programs enable new openings. HiLIFE [Tenure track and Fellows](#) programs increase the predictability, competitiveness and

attractiveness of academic career and promote internationalization at the University. While the HiLIFE assistant/associate professor positions shared with the partnering faculties attract new top talent ensuring renewal, the Fellows program awards flexible funding for ongoing outstanding principal investigators at all stages to prevent brain drain. Resourcing of HiLIFE's umbrella activities is based on open calls and transparent external evaluation -the cornerstones of HiLIFE's approach. In 2020, HiLIFE's investment into these activities was about 13 M€.



OUR GOVERNANCE

HiLIFE is regulated by University regulations and HiLIFE-specific [Rules of Procedure](#). The Director is nominated by the Rector and is responsible for HiLIFE strategic plans, overall budget and human resources plan, and overseeing organization of evaluation of HiLIFE activities by HiLIFE Scientific Council. [HiLIFE board](#), also nominated by the Rector, together with the director develops Institute's activities in accordance with the [University's strategy](#) and recommendations of the Scientific Council. International [HiLIFE Scientific Council](#) evaluates HiLIFE activities and organization in the context of the university, and provides recommendations on future plans and scientific directions. Unit (BI/FIMM/NC) directors are responsible for their unit's daily operations. Management team composed of HiLIFE director, unit directors, 1-4 experts on HiLIFE's umbrella activities and the Head of administration supports the director in preparing, implementing, and monitoring matters and decisions, and in internal and external communication and collaboration. HiLIFE's leadership and staff are supported by enthusiastic [University Services](#) so that academic community can focus on research, teaching, studying and public engagement.

THE UNIVERSITY OF HELSINKI

The [University of Helsinki](#) is an international scientific community of 40 000 students and researchers. It is one of the leading multidisciplinary research universities in Europe and ranks among the top 100 international universities in the world. Through the power of science, the University has contributed to society, education, and welfare since 1640.

Structure

The [organizational structure](#) of the University of Helsinki includes the University Collegium, the Board, the Rector, the Chancellor and University Services, the [faculties](#), joint operational units and independent research institutes (such as HiLIFE). The 11 faculties provide degree education on four campuses across the city of Helsinki. HiLIFE operates in close collaboration with the six life science faculties: Faculty of Agriculture and Forestry, Faculty of Biological and Environmental Sciences, Faculty of Medicine, Faculty of Pharmacy, Faculty of Veterinary Medicine, and Faculty of Science.

Strategy, with the power of knowledge for the world

The University of Helsinki is a community of research and learning based on courageous thought and dialogue. Our vision 2030 is to be one of the world's leading universities that generates understanding through research and teaching for the benefit of the global community. Everyday activities and interaction are founded on the shared values of truth, Bildung, freedom and inclusivity. Our research and teaching draw inspiration from [four themes](#) that spur collaboration between fields and disciplines and renew research and learning: *A meaningful life, human wellbeing and a healthy environment; A humane and fair world; A sustainable and viable future for our globe; and A universe of ideas and opportunities.*

To find more about the University of Helsinki and HiLIFE's values and activities, please visit

www.helsinki.fi/hilife

<https://www.helsinki.fi/en/about-us/careers/academic-careers>

<https://www.helsinki.fi/en/about-us/strategy-economy-and-quality/strategic-plan-2021-2030>

CALL FOR DIRECTOR OF HiLIFE

HiLIFE, [Helsinki Institute of Life Science](#), is one of the leading life science research institutes in the Nordics. It builds on existing strengths and new recruits and partnerships to create an attractive international environment where today's grand challenges in health and environment are solved together. HiLIFE supports outstanding research and generation of innovations across the University's campuses within partner faculties and its own units, the [Institute for Molecular Medicine Finland FIMM](#), the [Institute of Biotechnology](#) and [Neuroscience Center](#). HiLIFE also coordinates research infrastructures in life sciences and provides research-based interdisciplinary training. HiLIFE has a staff of more than 650 diverse scientists and support personnel. The budget exceeds 60 M€ of which about 65% is external competed research funding. The [University of Helsinki](#) is an international scientific community of 40,000 students and researchers with a critical outlook and a creative attitude. It is one of the leading multidisciplinary research universities in Europe and ranks among the top 100 international universities in the world. Through the power of science, we contribute to a meaningful life, human wellbeing and healthy environment!

We are now seeking candidates for the position of

DIRECTOR OF HiLIFE

Appointed by the Rector of the University of Helsinki, the Director of HiLIFE provides enthusiastic, inspiring and clear leadership to HiLIFE as a spearhead of the University's life science strategic research area and as a partner to the faculties of the University of Helsinki. The Director has overall responsibility of operations according to the University Regulations and HiLIFE Rules of Procedure and he/she prepares topics for the HiLIFE board.

The Director of HiLIFE promotes further development of a platform for high quality interdisciplinary research and teaching and strengthening of the University's international links in life science. A key factor for success will be close cooperation with the leadership of other life science units at the University, identifying areas of strength and working constructively across all life science areas.

The Director will be appointed initially for a term of 5 years with the possibility of renewal based on evaluation. The salary is negotiable within the salary system of Finnish universities. The appointee will assume the position at the latest in January 1, 2022. A six-month trial period will be applied.

Qualifications and experience

Candidates for the position think strategically, are innovative, have a global mind-set and strong people skills. Strong candidates will have outstanding leadership capabilities and demonstrable experience of leading interdisciplinary work and complex structures in life science with excellent collaboration, communication and change agility skills.

Candidates will show a strong commitment to a broad base of interdisciplinary research in life science, and have a clear familiarity with international and emerging trends in life science in addition to having a strong personal track record of research and funding in any area of life science. The appointee must hold a doctoral degree and have the skills to serve as an academic leader. To attend successfully to the duties of the position, the appointee must be fluent in English. Proficiency in Finnish or Swedish is useful, but not necessary.



Application deadline and further information

Applications are welcome until **August 16th, 2021**.

For further information or proposals for nominations, please contact Vice-Rector and chair of HiLIFE Board Paula Eerola by email [vicepresident\(at\)helsinki.fi](mailto:vicepresident(at)helsinki.fi) (subject: “HiLIFE director”) or by phone + 358 29 412 2382 (Executive assistant of Vice-Rector Eerola – unavailable from July 16th). Please note that there may be delays in email correspondence during July.

For more information on HiLIFE or the recruitment process, you may contact Head of Administration Jonna Katajisto by email [jonna.katajisto\(at\)helsinki.fi](mailto:jonna.katajisto(at)helsinki.fi) or by phone +358 2941 57562 (unavailable during July) or HiLIFE HR specialist Anu Roine by email [anu.roine\(at\)helsinki.fi](mailto:anu.roine(at)helsinki.fi) or by phone + 358 2941 5163 (unavailable during July 10 – August 10).

In case you need technical support with the recruitment system, please contact [rekrytointi\(at\)helsinki.fi](mailto:rekrytointi(at)helsinki.fi).

Submission of applications

Please submit your application, together with the required attachments, through the University of Helsinki Recruitment System via the link Apply for the position. Applicants who are employees of the University of Helsinki are requested to leave their application via the SAP HR portal <https://saphr.it.helsinki.fi/irj/portal>.

Please attach following information to your application (as pdf file)

- i. CV (max 4 pages including biosketch and summarizing education, positions and academic work)
- ii. your vision for the development of HiLIFE as part of the University of Helsinki
- iii. statement on future development of life science research and your leadership strategy
- iv. a list of not more than 10 selected publications with motivation for selecting each, and a link or reference (e.g. ORCID) to a complete list of publications.

To find more about us, please visit

www.helsinki.fi/hilife

<https://www.helsinki.fi/en/about-us/careers/academic-careers>